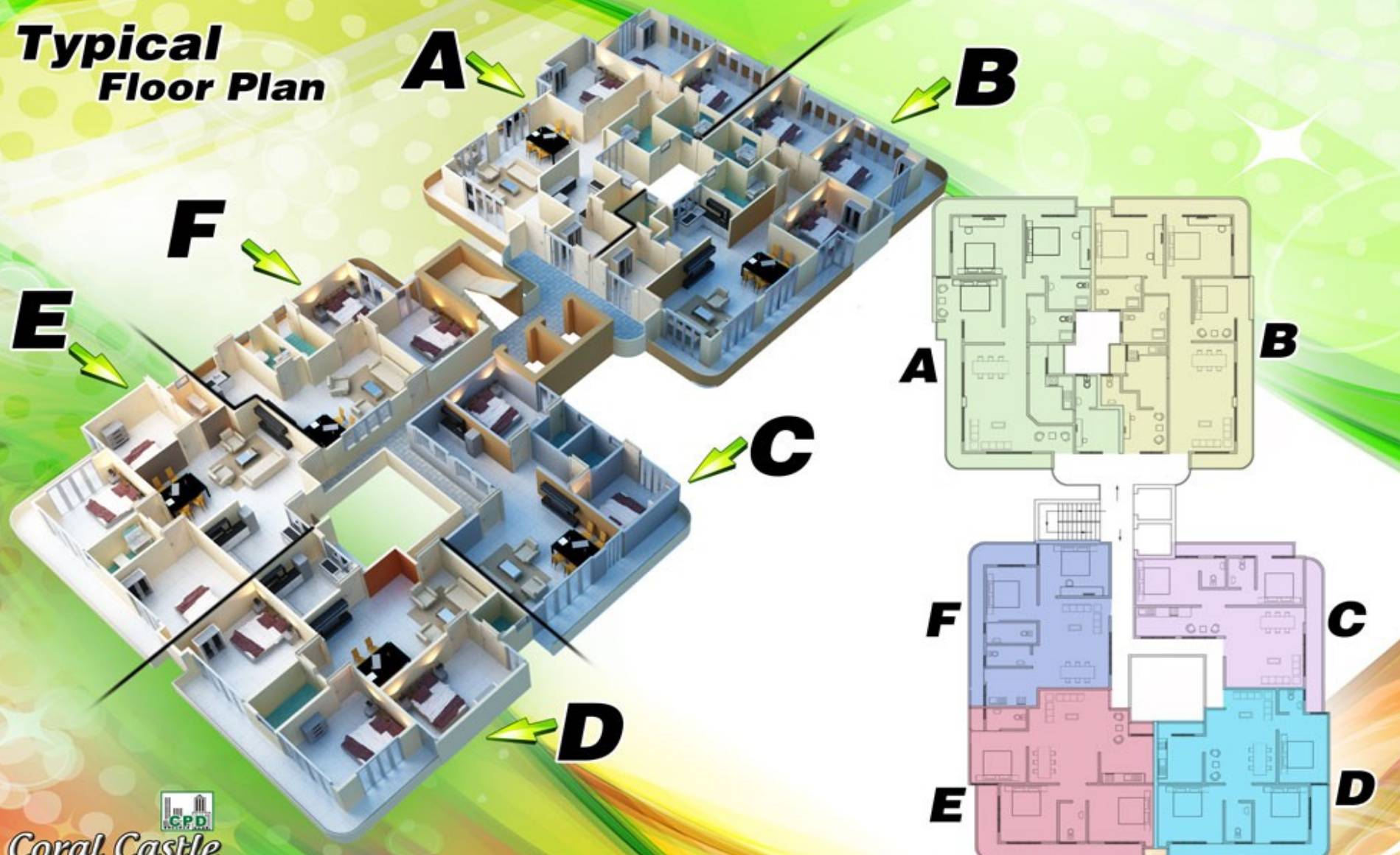




Coral Castle
Luxury Apartments
29, 36th Lane, Wellawatte
(38, Rajasinghe Road, Wellawatte)

Typical Floor Plan



Unit Type A

1500 Sq.Ft

4 Bedroom Apartment



- 1. Living & Dining 11' 3" X 20' 6"
- 2. Bedroom 12' 4" X 8' 0"
- 3. Bedroom 12' 7" X 11' 4"
- 4. Master Bedroom 11' 10" X 11' 4"
- 5. Master Bathroom 7' 9" X 6' 0"
- 6. Bathroom 8' 0" X 6' 0"
- 7. Kitchen 8' 0" X 9' 0"
- 8. Maids Bedroom 7' 9" X 8' 0"
- 9. Maids Bathroom 3' 10" X 6' 0"



Unit Type B

1400 Sq.Ft
4 Bedroom Apartment



- | | |
|--------------------|------------------|
| 1. Living & Dining | 11' 9" X 20' 10" |
| 2. Bedroom | 10' 8" X 7' 7" |
| 3. Bedroom | 11' 9" X 11' 4" |
| 4. Master Bedroom | 12' 4" X 11' 4" |
| 5. Master Bathroom | 8' 4" X 6' 0" |
| 6. Bathroom | 8' 0" X 6' 0" |
| 7. Kitchen | 8' 0" X 9' 0" |
| 8. Maids Bedroom | 7' 9" X 8' 0" |
| 9. Maids Bathroom | 3' 5" X 5' 8" |



Coral Castle
Luxury Apartments

Unit Type C

825 Sq.Ft
2 Bedroom Apartment



- | | |
|--------------------|-----------------|
| 1. Living & Dining | 14' 0" X 15' 6" |
| 2. Bedroom | 8' 4" X 9' 0" |
| 3. Master Bedroom | 11' 4" X 9' 0" |
| 4. Master Bathroom | 4' 5" X 5' 8" |
| 5. Bathroom | 4' 10" X 5' 8" |
| 6. Kitchen | 16' 0" X 5' 8" |



Coral Castle
Luxury Apartments

Unit Type D

1000 Sq.Ft
3 Bedroom Apartment



- | | |
|--------------------|------------------|
| 1. Living & Dining | 12' 10" X 18' 0" |
| 2. Master Bedroom | 8' 10" X 13' 0" |
| 3. Bedroom | 10' 0" X 11' 0" |
| 4. Bedroom | 11' 8" X 11' 0" |
| 5. Bathroom | 4' 10" X 7' 6" |
| 6. Master Bathroom | 4' 6" X 4' 6" |
| 7. Kitchen | 8' 0" X 9' 0" |



Coral Castle
Luxury Apartments

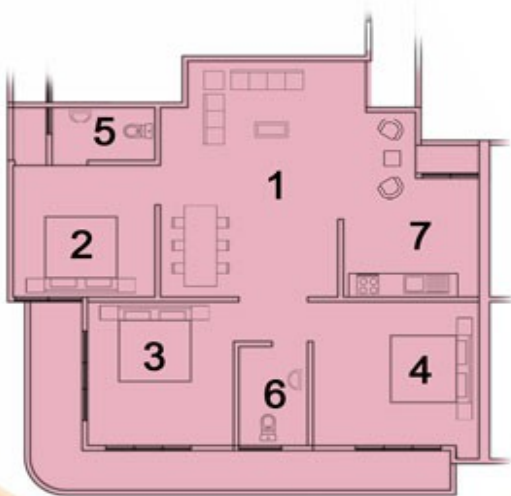
Unit Type E

1100 Sq.Ft

3 Bedroom Apartment



- | | |
|--------------------|------------------|
| 1. Living & Dining | 12' 6" X 17' 10" |
| 2. Master Bedroom | 10' 0" X 10' 0" |
| 3. Bedroom | 10' 6" X 11' 0" |
| 4. Bedroom | 11' 8" X 11' 0" |
| 5. Master Bathroom | 7' 3" X 3' 7" |
| 6. Bathroom | 4' 10" X 7' 6" |
| 7. Kitchen | 9' 6" X 9' 0" |



Coral Castle
Luxury Apartments

Unit Type F

750 Sq.Ft

2 Bedroom Apartment



- 1. Living & Dining 12' 0" X 17' 2"
- 2. Bedroom 12' 6" X 10' 0"
- 3. Master Bedroom 9' 2" X 10' 3"
- 4. Master Bathroom 9' 2" X 4' 0"
- 5. Bathroom 8' 0" X 4' 0"
- 6. Kitchen 9' 2" X 7' 4"





Car Park & Swimming Pool

**Roof
Top**

**Ground
Floor**

**Car
Lift**

**Car
Lift**

Basement

Key Features

Features

- Optimal balance in lighting ventilation & privacy
- Top quality materials & luxury finishes
- Floor finishes - Polished porcelain tiled floors
 - Ceramic tiled toilets, pantry walls & common area
- Bathrooms - Imported Sanitary ware
 - Hot water geyser in master bathroom
- Kitchen - Luxury mahogany pantry cupboards
- Doors - Entrance doors are imported class 1 timber and water proof doors in all bathrooms
- Living & all bedrooms are fitted with high quality ceiling fans
- Telephone outlets in living and master bedroom
- High speed 2 elevator up to roof top garden
- Party facilities in roof top
- Top garden for children amusement & get together
- Individual electricity meters
- Full secured eight feet parapet wall right around
- Private individual balconies for living and all bedrooms
- Windows made of rust proof powder coated aluminium
- Garbage storage area in ground floor

Special Features

- A/C provision for master bedroom
- Standby generators for common area lighting, elevators, water & fire pumps
- Interior communication system - individual communication facility from apartments to reception office and among apartments
- Ample parking facility with all safety protocols
- Water proof & heat proof
 - Bathrooms, roof top balconies, yards and external walls are fully water proof
 - Roof top fully heat proof
- Washing machine connection in yard area
- Modern fire protection designed in conformity with municipal regulations
- Lightening arrester mechanism
- 24 hours security service
- Exhilarating sea view point at roof top
- Basement & ground floor are reserved for car park and ground floor for visitors
- Swimming pool at roof top



Coral Castle
Luxury Apartments

Mode of Payment

Reservation 500,000/-

1st Installment - 40% (Less reservation fee)
(Within one month of booking)

2nd Installment - 15%
(On Completion of 1st slab)

3rd Installment - 15%
(On Completion of 2nd slab)

4th Installment - 15%
(On Completion of 3rd slab)

5th Installment - 10%
(On Completion of 4th slab)

6th Installment - 5%
(On Completion)

All payment should be completed before occupation.



